

Results

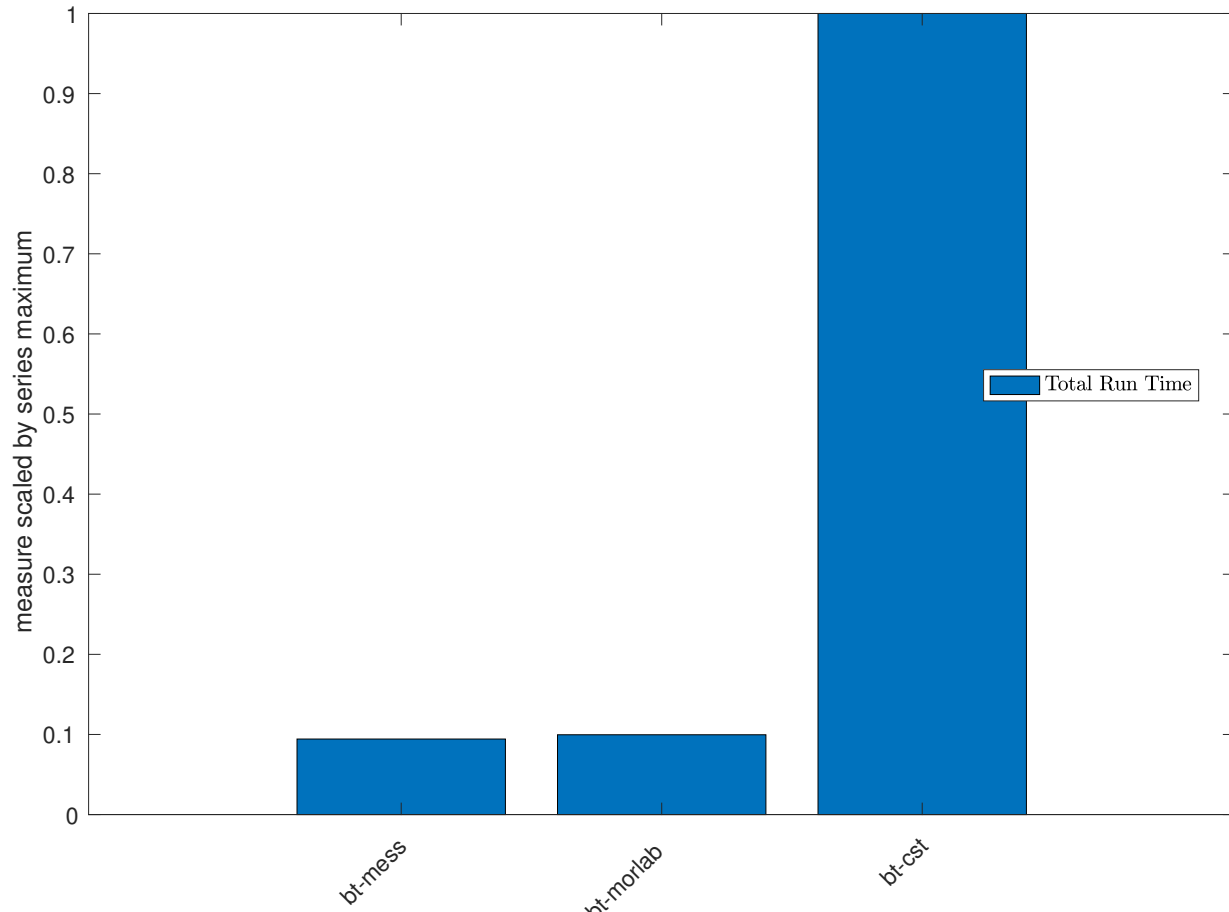
26-Jan-2023 10:27:40

1 Run Details

- Benchmark ID: slicot/cdPlayer.n120m2q2
- Matlab version: 2022a
- Number of states (n): 120
- Number of inputs (m): 2
- Number of outputs (q): 2
- Max ROM order: 100
- Tolerance: 10^{-6}

2 Ranked Run Times

Algorithm Isotope	ROM Order	Time (s)	% Speed-up
bt-cst	109	9.01e+00	0.00
bt-morlab	73	8.98e-01	90.04
bt-mess	68	8.50e-01	90.57



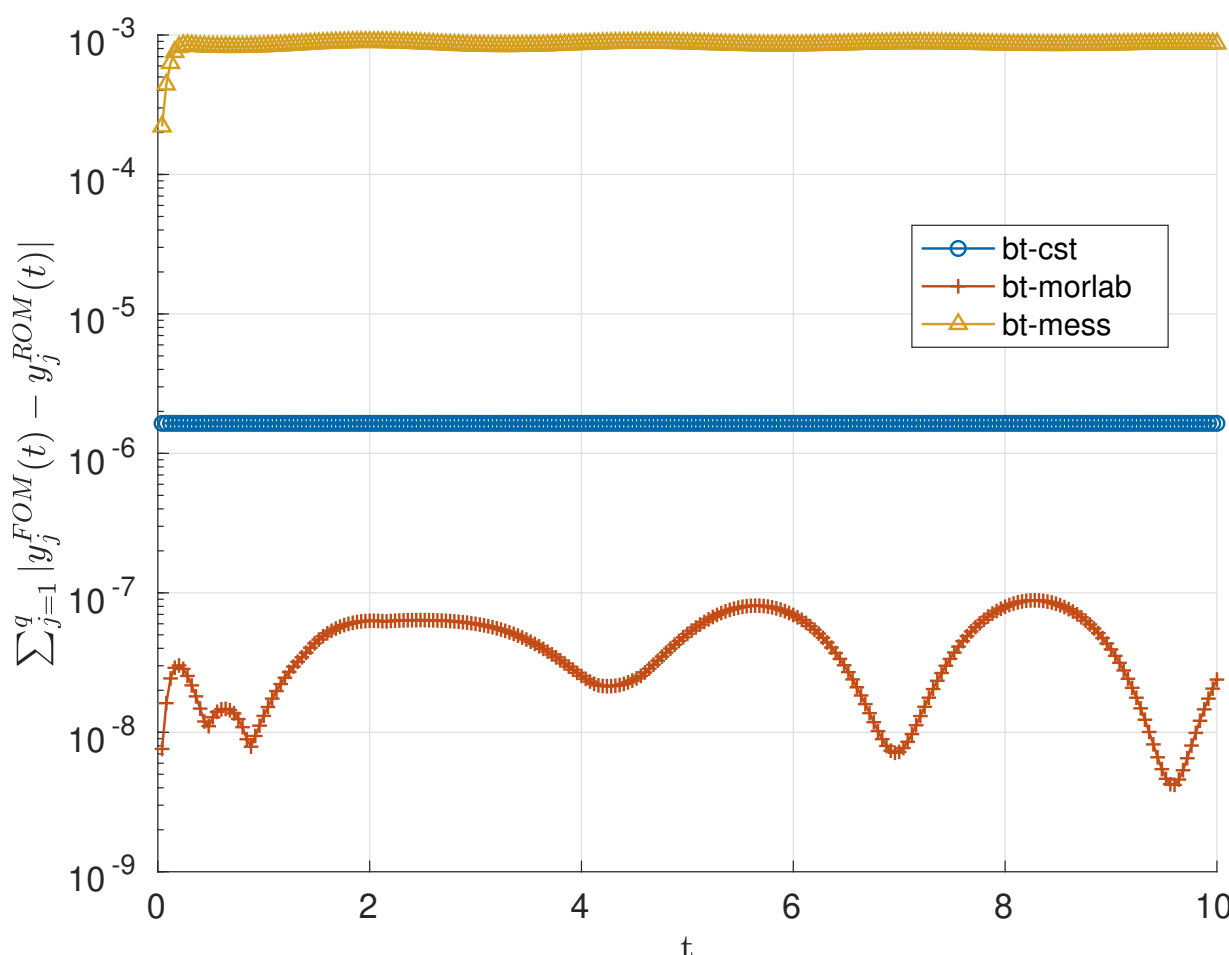
3 Error norms

All norms are relative, i.e., scaled by norm of the full-order system.

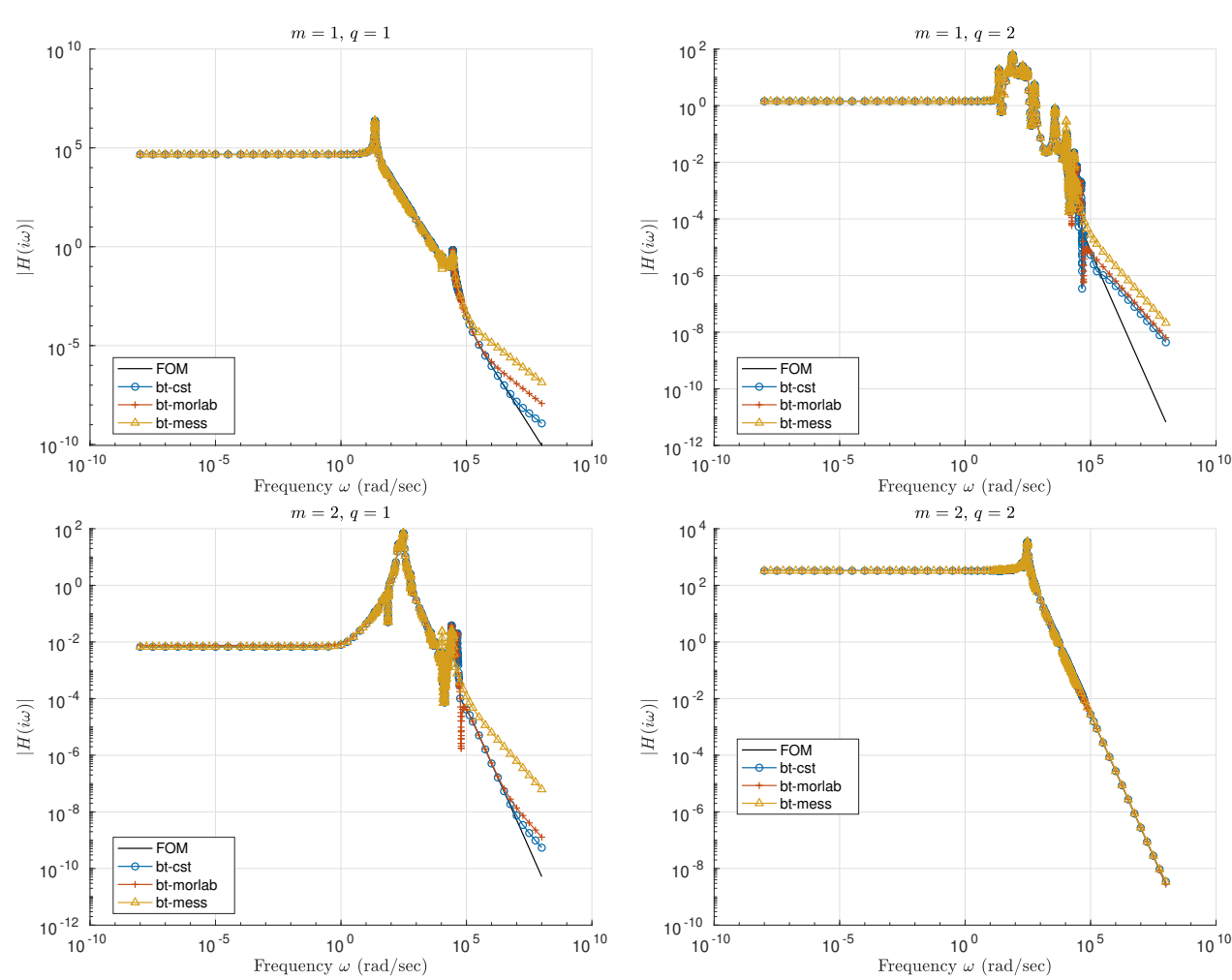
Algorithm Isotope	L_0	L_1	L_2	L_∞	H_2
bt-cst	1.00e+00	7.01e-11	5.74e-11	4.30e-11	1.53e-07
bt-morlab	1.00e+00	3.64e-08	3.16e-08	2.53e-08	3.52e-06
bt-mess	1.00e+00	1.82e-12	1.96e-12	2.76e-12	1.53e-04

4 Mean absolute error over fixed time interval

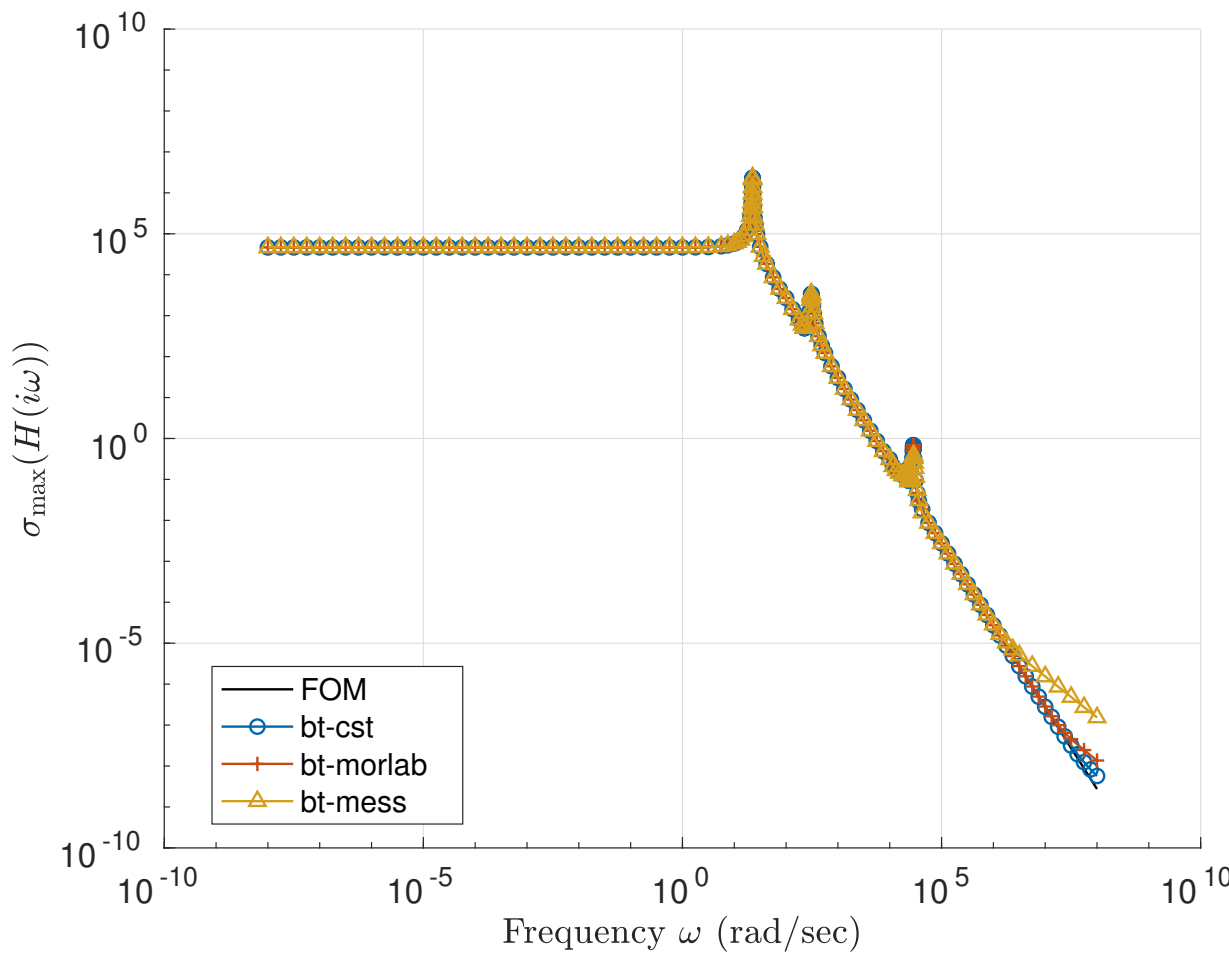
Output function given by y with components denoted as y_j , $j = 1, \dots, q$.



5 Bode diagrams



6 Sigma plot



7 Frobenius plot

